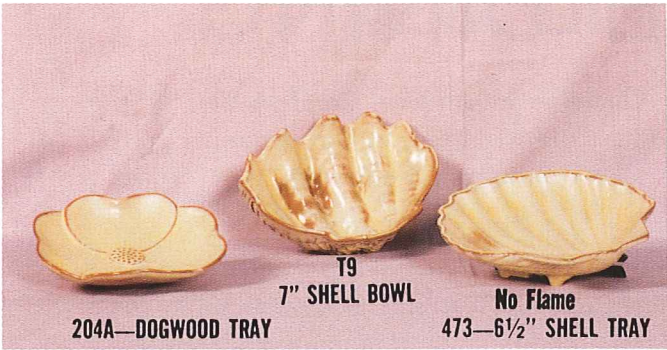


**TRAYS SUITABLE FOR RELISH, NUTS, JELLIES, SALADS AND CANDY**



204A—DOGWOOD TRAY

T9  
7" SHELL BOWL

No Flame  
473—6½" SHELL TRAY

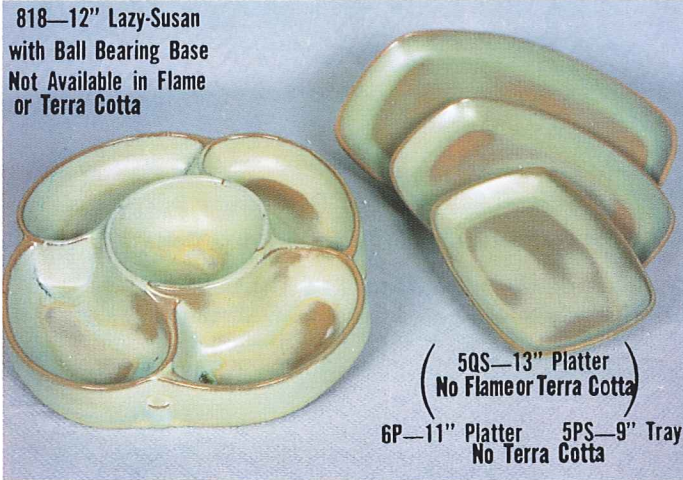


223—6" FOUR LEAF CLOVER

83—12" Division Relish Dish

225—7" LEAF TRAY

Not Available in Flame or Terra Cotta.



818—12" Lazy-Susan  
with Ball Bearing Base  
Not Available in Flame  
or Terra Cotta

5QS—13" Platter  
No Flame or Terra Cotta

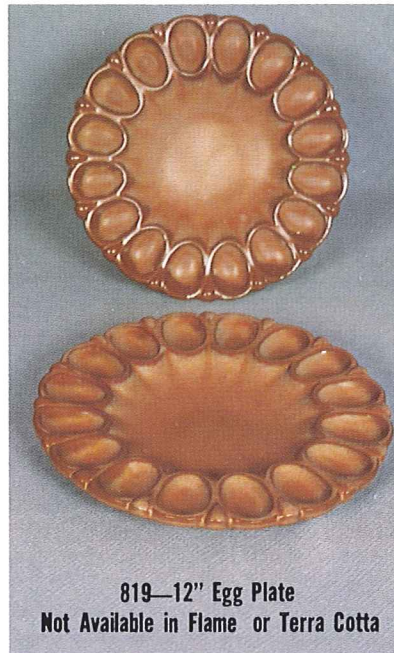
6P—11" Platter 5PS—9" Tray  
No Terra Cotta



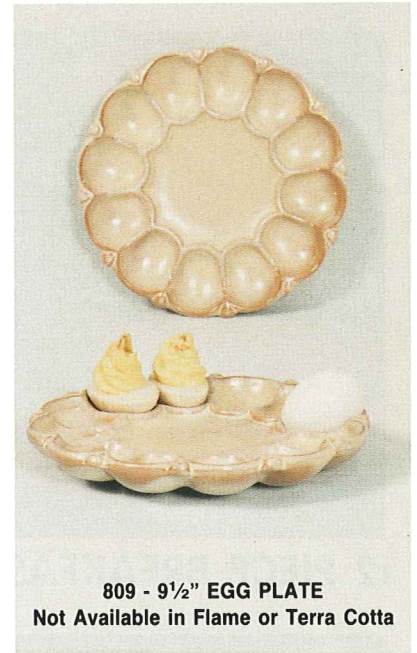
T10—12" SHELL BOWL  
T9—7" SHELL BOWL  
(Center piece or Salad set)  
(No Terra Cotta or Flame)



257/B CHILDREN'S SET  
BOXED W/SEE THRU LID



819—12" Egg Plate  
Not Available in Flame or Terra Cotta



809 - 9½" EGG PLATE  
Not Available in Flame or Terra Cotta



72T - 10" Wine & Beverage  
Cooler Soak in water,  
place cool wine bottle in-  
side, keeps wine or  
beverage cool through  
evaporation during serving  
time. AVAILABLE IN  
TERRA COTTA ONLY

82T - 1 3/4 qt (54 oz)  
Beverage Server  
Soak server in water and  
cool in refrigerator for  
approximately 20 to 30  
minutes. Pour cool wine or  
beverage in container and  
serve. Wine or beverage  
will stay cool  
approximately 4 hours.  
AVAILABLE IN DWTC

HC - 5" Coaster - (perfect to complete sets above)  
TERRA COTTA ONLY



227—17" LEAF TRAY

225—7" LEAF TRAY

226—11" LEAF TRAY

Not Available in Flame  
or Terra Cotta.



No Terra Cotta

WA1—8" Warmer w/Candle  
WA3—6" Warmer w/Candle

Available in Standard Frankoma Colors  
- except where noted - ADD 50% for Flame